

APR. 1, 2005 - FOR ESTIMATE

JUN. 3, 2005 - FOR ENGINEERINGS

JUN. 16, 2005 - FOR REVIEW

JUL. 21, 2005 - FOR PERMIT

AUG. 03, 2005 - FOR PERMIT

AUG. 15, 2005 - FOR CROOKED
PINES REVIEW

AUG. 22, 2005 - FOR GRADING
AUTHORIZATION APPLICATION

AUG. 24, 2005 - FOR PLAN
CORRECTIONS

AUG. 26, 2005 - FOR CLIENT
REVIEW

AUG. 30, 2005 - FOR CROOKED
PINES REVIEW

SEP. 08, 2005 - FOR PLAN CHECK
RESPONSE

GENERAL NOTES

- DRAWINGS ARE THE PROPERTY OF HEARTWOOD LOG & TIMBER DESIGN INC. AND THE ORIGINAL LINCOLN LOG HOMES LTD. ANY UNAUTHORIZED USE IS STRICTLY PROHIBITED.
- CONTRACTORS ARE RESPONSIBLE FOR CHECKING AND VERIFYING ALL DIMENSIONS. REPORT ALL INCONSISTENCIES TO HEARTWOOD LOG & TIMBER DESIGN INC. AND THE ORIGINAL LINCOLN LOG HOMES LTD. DO NOT SCALE FROM DRAWINGS.
- CONFIRM ALL DETAILS NOT SHOWN WITH HEARTWOOD LOG & TIMBER DESIGN INC. AND THE ORIGINAL LINCOLN LOG HOMES LTD. NON-APPROVED DETAILS MAY BE REQUIRED TO BE CHANGED.
- ANY SUBSTITUTION OF MATERIALS MUST BE APPROVED BY HEARTWOOD LOG & TIMBER DESIGN INC. AND THE ORIGINAL LINCOLN LOG HOMES LTD.

DRAWN BY: MB

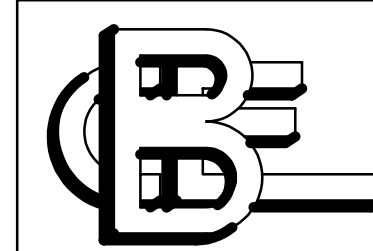
APPROVED: MTA

DATE: JUL. 21, 2005

PLOT SIZE: D

SCALE: AS SHOWN

HEARTWOOD LOG & TIMBER DESIGN INC.
199 WOOLWICH STREET
GUELPH, ONTARIO, CANADA N1H 3V4
TEL: 519-829-1758
FAX: 519-829-3672
EMAIL: MAIL@DESIGNMA.COM



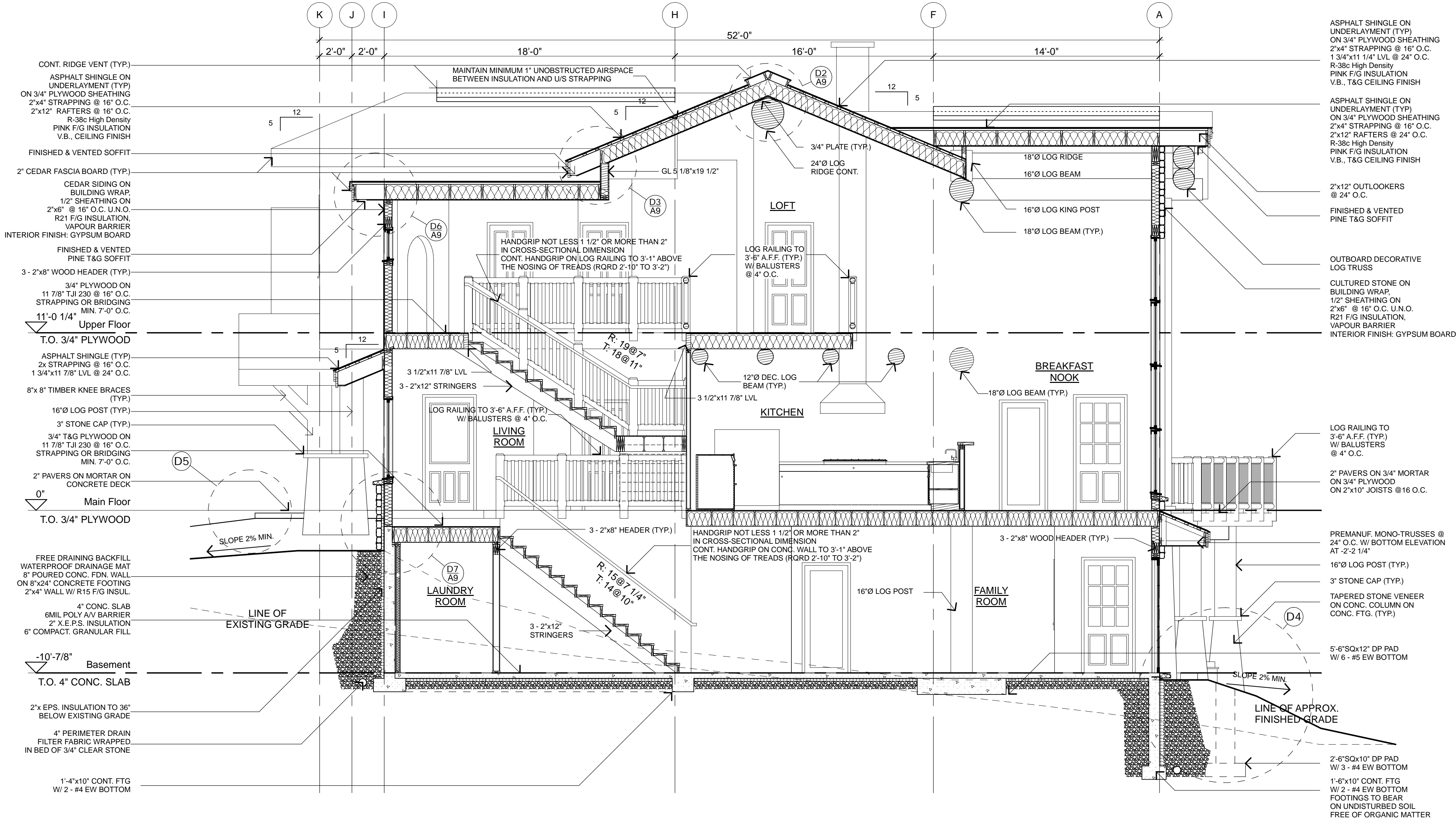
STRUCTURAL
BEAUDETTE CONSULTING
ENGINEERS, INC.
131 WEST MAIN
MISSOULA, MT. 59802
TEL: (406) 721-7315
FAX: (406) 542-8955
www.bcwebb.com

PROJECT:

CLEVELAND RESIDENCE
MAMMOTH LAKES, CA

BUILDING SECTION

A8



1 Section A
A8 1/4" = 1'-0"